

SPONSORSHIPS & TICKETS

TICKETS

INDIVIDUAL	\$500	PREFERRED RATE: \$425 if paid for by August 31 st
TABLE OF 8	\$4,000	PREFERRED RATE: \$3,200 if paid for by August 31 st
TABLE OF 10	\$5,000	PREFERRED RATE: \$4,000 if paid for by August 31 st

E-JOURNAL PRESENTATION

(All ads are displayed on a big screen in OHEKA's main ballroom and on the St. Catherine website for one full year after the event)

FULL SCREEN	\$2,000
½ SCREEN	\$1,000
¼ SCREEN	\$750
NAME LISTED	\$300

TABLE SIGNAGE

(Your sign with greeting will be set on the table in a gold frame beside the centerpiece and flowers)

COMMISSIONER'S TABLE	\$1,000
CHS VIP TABLE	\$750
GUEST TABLE	\$300

UNDERWRITING OPPORTUNITIES

(The following underwriting opportunities help subsidize the event - they do not include dinner and are fully tax deductible to the extent allowed by law)

DIAMOND	\$5,000
RUBY	\$2,500
EMERALD	\$1,000
SAPPHIRE	\$500

20 17



SCHEDULE OF EVENTS

CHAMPAGNE AND PHOTOGRAPHS	5:00PM - 6:00PM
COCKTAIL HOUR	6:00PM - 7:00PM
BISHOP'S INVOCATION & AWARDS	7:00PM - 7:30PM
DINNER & CELEBRATION	8:00PM - 11:00PM

(OHEKA DOORS WILL OPEN AT 5PM FOR INDIVIDUAL PHOTOGRAPHS AND CHAMPAGNE)

BLACK TIE PREFERRED

HONOREE

TIM SINI
SUFFOLK COUNTY
POLICE COMMISSIONER



ETHICS • COMMUNITY • INTEGRITY • FAITH

PREMIER SPONSORSHIPS

PLATINUM \$20,000

VIP SEATING: 2 reserved window tables for 24 of your guests

E-JOURNAL AD: Elegant full-screen ad displayed on a big screen in OHEKA's main ballroom throughout event

WEBSITE AD: Your ad on the St. Catherine of Siena website for one full year

GALA PROGRAM: Your name and logo displayed as a premier sponsor

SPECIAL RECOGNITION: St. Catherine of Siena CAO thank you during awards

STEP & REPEAT: Your logo on a banner as backdrop for official event photo with guests on a red carpet in front of it

SOCIAL MEDIA: Custom thank you posts on St. Catherine of Siena Medical Center Facebook page

OHEKA ONE-NIGHT STAY: Two rooms with breakfast and dinner for 4

OHEKA CASTLE GIFT: 4 Robes, 4 Polo Shirts, 2 Blankets

GOLD \$15,000

INCLUDES PLATINUM PACKAGE but VIP seating is for 16 and OHEKA one-night stay is for 1 room with breakfast and 2 robes

SILVER \$10,000

INCLUDES PLATINUM PACKAGE but VIP seating is for 10 and there is no OHEKA stay or gift

BRONZE \$5,000

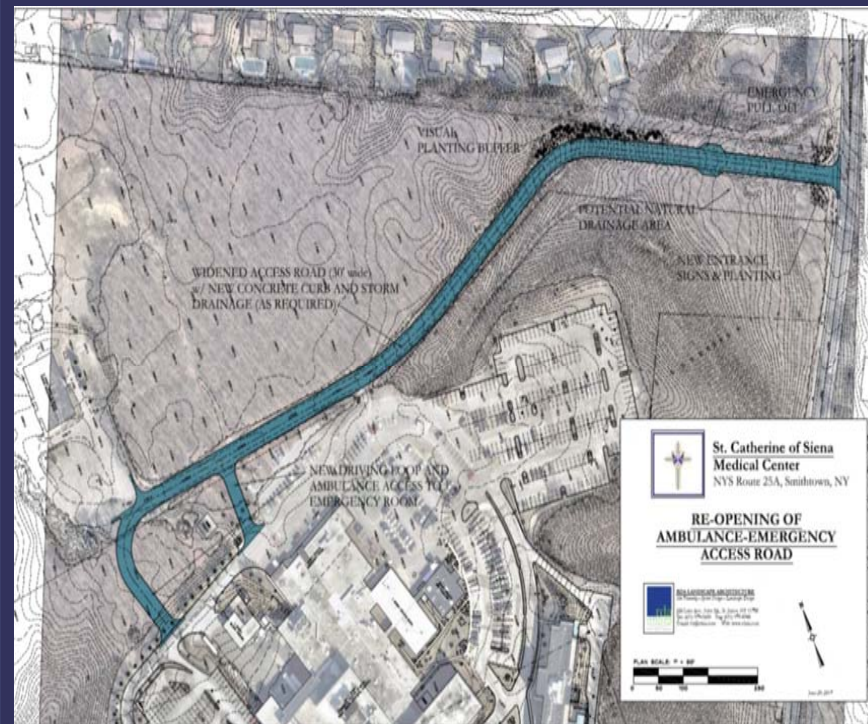
INCLUDES VIP SEATING for 6 of your guests plus E-JOURNAL AD, WEBSITE AD, and listing in GALA PROGRAM

MAKE A DONATION

If you would like to make a direct donation to the St. Catherine of Siena Foundation please visit our website at www.stcatherines.chsli.org and click on *Ways to Give*

GALA PROCEEDS

Time is of the essence when it comes to treating a stroke, heart attack, drug overdose or any of the injuries inflicted in an auto accident or on a playing field. In an effort to ensure our police, fire departments and EMS personnel have immediate access to critical care, St. Catherine of Siena is building a dedicated new entrance and access road for first responders that will lead directly to our Emergency Department (ED), so that afflicted patients can be treated quicker and in severe cases lives can be saved.



THANK YOU FOR YOUR SUPPORT

As a not-for-profit institution, St. Catherine of Siena Medical Center depends on **YOUR** contributions to sustain and grow our service lines in a highly competitive market where only 28% of hospitals in the United States are profitable.

In return, we provide over \$500 million in jobs and services to the community, and support nearly every event, parade, luncheon and festival in our service area. We also offer numerous free screenings and community programs, are actively engaged with the local Chambers, and have enlisted local residents to make up our Community Advisory Council and Foundation Board.

In 2017, St. Catherine will spend over 11 million dollars in new technology, medical equipment, and personnel in order to offer our patients the best healthcare services possible, and to underscore our commitment to you, your families and your community.

A prestigious acknowledgement of that commitment was recently awarded to St. Catherine with the state-wide Healthcare Association of New York State (HANYS) Pinnacle Award for Quality for hospitals between 200 - 500 beds. The award recognized the outstanding work done to enhance our pre-arrival communication with our EMS providers, minimizing the time needed to complete essential diagnostics and initiate emergency care. This initiative had a major impact on improving the outcomes of our care to stroke victims.

To further those accomplishments and efforts, this year's gala proceeds will be used to build a direct access road to the ED for our first responders, so that our critical care teams can treat patients sooner and minimize the devastating effects of an overdose, heart attack, seizure or stroke.

On behalf of all the staff at St. Catherine of Siena Medical Center, I thank you in advance for supporting our efforts and hope to see you at OHEKA Castle!

Paul J. Rowland
Executive Vice President &
Chief Administrative Officer



ST. CATHERINE OF SIENA MEDICAL CENTER
INVITES YOU TO JOIN US AT OUR

17th Annual Gala

FRIDAY, OCTOBER 13, 2017

OHEKA CASTLE
HUNTINGTON, NEW YORK